



SKIOLD TROUGH AUGERS



SKIOLD MAKES THE DIFFERENCE!



SKIOLD TROUGH AUGERS SYSTEM U 10 - 15 - 20

Capacity up to 100 m³ per hour

Length up to 45 m

ATEX approved gear motors, zone 22

Heavy augers with reinforced bolt connections

Galvanized trough with tight-fitting cover

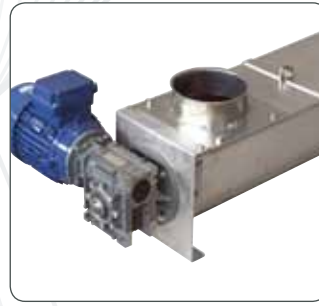
Wide range of accessories



End outlet



Motor operated intermediate outlet



Drive unit with gear motor drive



Auger suspended in adjustable ball bearings

High Quality And Trouble-Free Operation

SKIOLD trough augers are designed for horizontal transport of all meal, grain or pelleted products and are dimensioned for many daily starts/stops and many daily operation hours. The augers are operated by ATEX approved gear motors. With worm drive up to a maximum of 10 m and cogwheel gearbox beyond this. The auger flight is made of 5 mm steel cold-welded onto a heavy centre pipe. Assembly of the augers takes place by means of double Allen bolts. Troughs and covers are manufactured in galvanized steel. The adjustable intermediate bearings, every 1 or 2 m sections, are maintenance-free high quality ball bearings. In build design and quality,

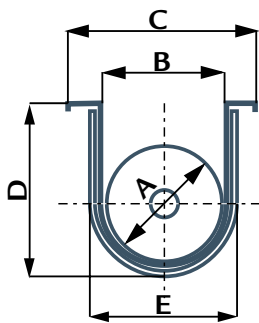
SKIOLD trough augers are far ahead of other augers on the market today, ensuring long and troublefree operation without stops.

Capacity For All Requirements

Three models ensure capacity of up to 100 m³ per hour and a maximum length of up to 45 m. Adaptation of the capacity takes place by speed of the gear motors, and with a wide selection of gear types and motors kept in stock, SKIOLD is able to deliver the optimum combination of length, capacity and motor output appropriate to your needs.

Wide Programme Of Accessories

To achieve our aim of a universal range of trough augers capable of many types of tasks, we also require a correspondingly wide range of accessories. A random selection of these are: Different inlet sizes, motor operated intermediate outlet, manual intermediate outlet, end outlets, long open silo outlet. SKIOLD has the solution for any need.

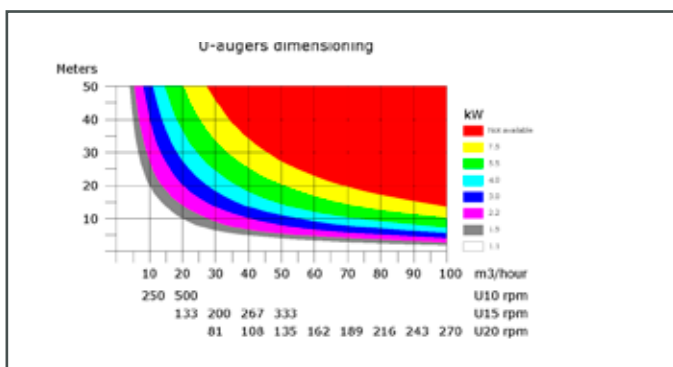


Dimensions

| | A | B | C | D | E |
|-----|-----|-----|-----|-----|-----|
| U10 | 100 | 130 | 186 | 138 | 140 |
| U15 | 150 | 180 | 236 | 205 | 190 |
| U20 | 200 | 220 | 302 | 245 | 234 |

Capacity m³/Hour

| | Min. | Max |
|-----|------|-----|
| U10 | 13 | 22 |
| U15 | 13 | 48 |
| U20 | 32 | 104 |



PLANT EXAMPLE

