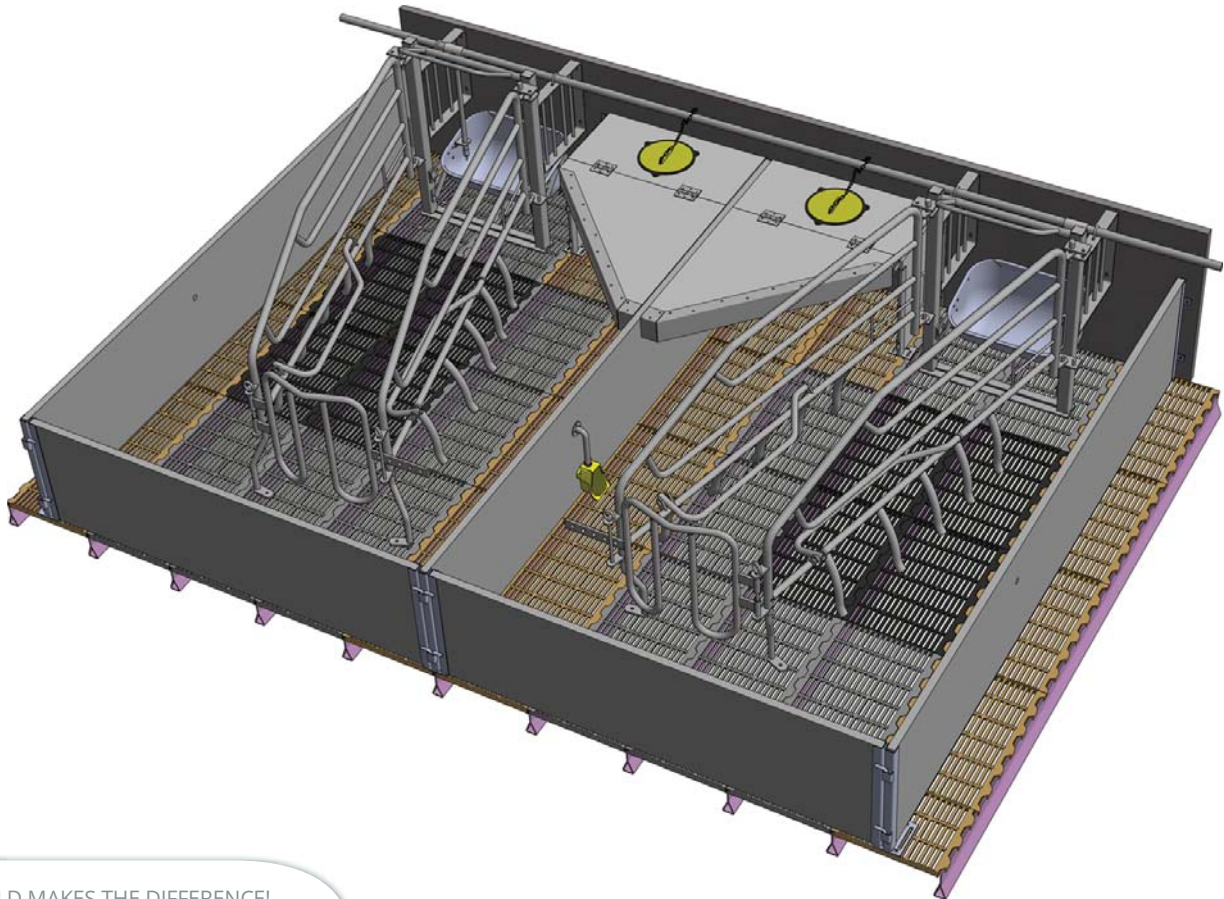




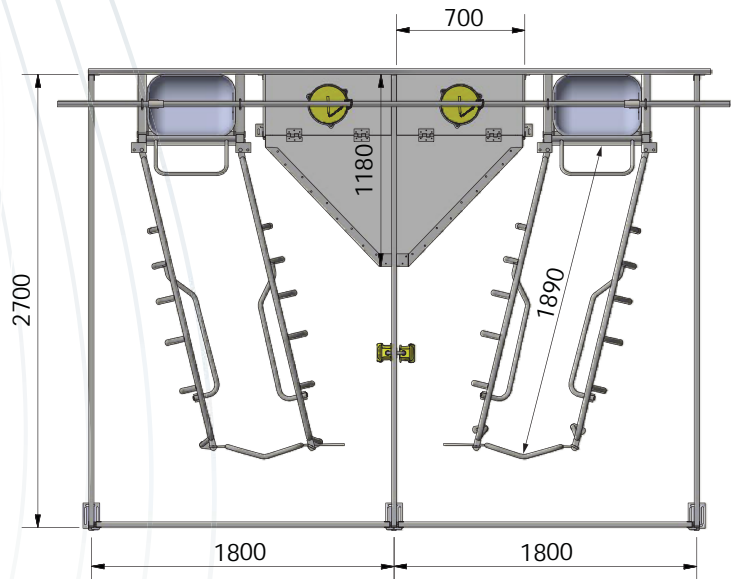
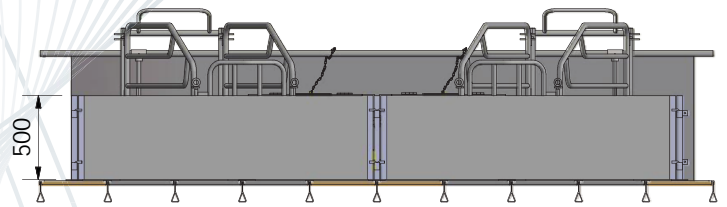
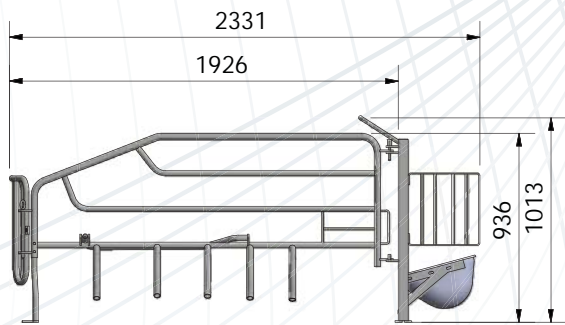
NEWLINE FARROWING PEN



SKIOLD MAKES THE DIFFERENCE!

- The Newline farrowing crate is designed to give the sow and the piglets enough space during the whole lactating period.
- The wings with the bended fingers are supporting on the whole back and give the piglets a good access to the sow.
- The penning is made from light plastic board profiles, together with the special brackets at the rear access that providing an easy access during the birth period.
- The creep nest is protecting the piglets and is creating a good microclimate.

All measures in mm



Facts:

- Length of the pen 270 cm.
- Width of the pen 180 cm.
- Height of the pen 50 cm.
- Length of the crate excl. trough 200 cm.
- Long, special designed fingers.
- Crush bar.
- Minimum distance between the crate sides incl. crush. bars 33 cm.
- Maximum distance between the crate sides incl. crush. bars 51 cm.
- Water supply in stainless steel.
- Water valve as water supply for sow.
- Water cup as water supply for piglets.
- Stainless trough shaped by deep drawing with 21 l. volume.
- 0,6 m² creep nest.

Material thickness of galvanized steel parts:

Posts 50x50x3mm

U-profiles 35x30x35x 3mm

Pipes = 33,4x2,5 mm

Additional options:

Heat lamp for creep nest

Rubber mat for creep nest

Alternative rear gate for larger sows (+ 80mm)